

## Introduction

The Telos ProSTREAM is a hardware audio processor and encoder. Unlike a PC, it does not have a hard drive. This makes ProSTREAM more reliable, since it has no moving parts, but it also means that ProSTREAM is unable to store large amounts of logging data for review. ProSTREAM's web configuration page can display only the last 500 log messages. In order to get around this limitation, ProSTREAM can send log messages to a syslog server<sup>1</sup>. The syslog server, described in this document, allows you to receive, view and save syslog messages generated by ProSTREAM.

## Requirements

The syslog server is a .NET application targeted for Windows 7, but Windows XP and later PCs should be able to run it as long as the .NET client profile v3.5, or later, is installed. This can be downloaded and installed free of charge from Microsoft's web site, at this location (valid as of this writing):

<http://www.microsoft.com/en-us/download/details.aspx?displaylang=en&id=14037>

## Installation

No special installation is required to run the syslog server application. Just unzip the executable to a folder of your choice, and double-click it to run. When running it for the first time, Windows firewall may ask about allowing the application access to the network. You must select "allow" for the application to be able to receive messages from ProSTREAM.

## Using Syslog Server

In order to receive messages in the syslog server, you need to configure your ProSTREAM to send the log messages to the IP address of the PC running the server.

### Find PC's IP address

If you don't know the IP address of the PC running syslog server, then you can find it out by following these steps:

1. Click the Windows' start button on the taskbar (or just press Ctrl-ESC).
2. In the command, or search box in Windows 7, type `cmd` then press Enter.
3. You should now see the command prompt, usually displayed in an unattractive black window. Type `ipconfig` then press Enter. You should now see the IP of the PC displayed (see Figure 1). Make a note of the IP address; you will need to enter it on the ProSTREAM logs page.

---

<sup>1</sup> Syslog is a standard for data logging. Syslog clients send messages to a syslog server which may display or save them to a local file. Syslog messages are most often sent using the UDP protocol.

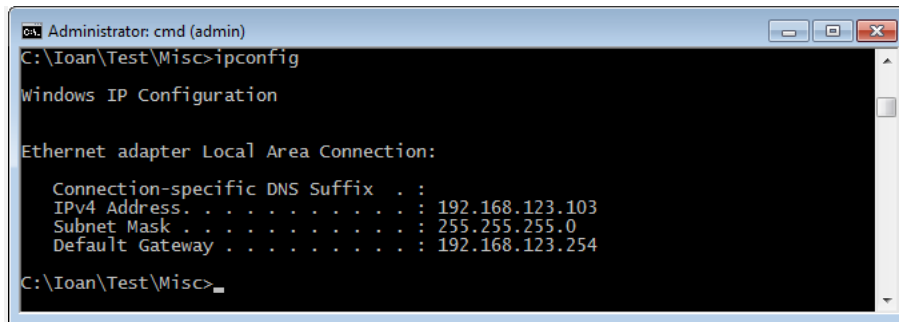


Figure 1: Command window showing ipconfig results

## Configure ProSTREAM to send log information to syslog server

Use a web browser to connect to ProSTREAM's web interface. Click the Logs link on the main page. On the logs page, select "SysLog server" for the Remote logging option. Enter the IP address of the PC running the syslog server in the Server address field, then click the Save button (see Figure 2).

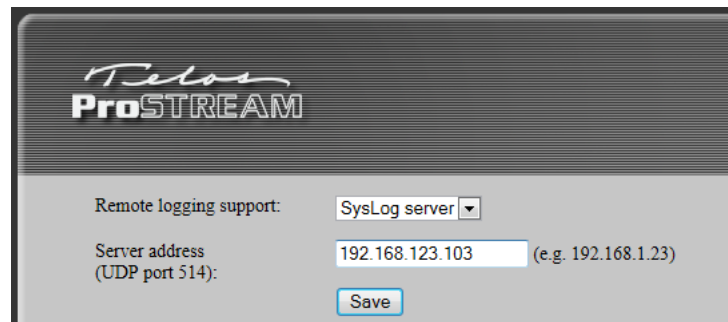


Figure 2: Configure ProSTREAM for syslog server

Return to the syslog server application. You should now see messages coming from the ProSTREAM displayed in the syslog server's window (see Figure 3).

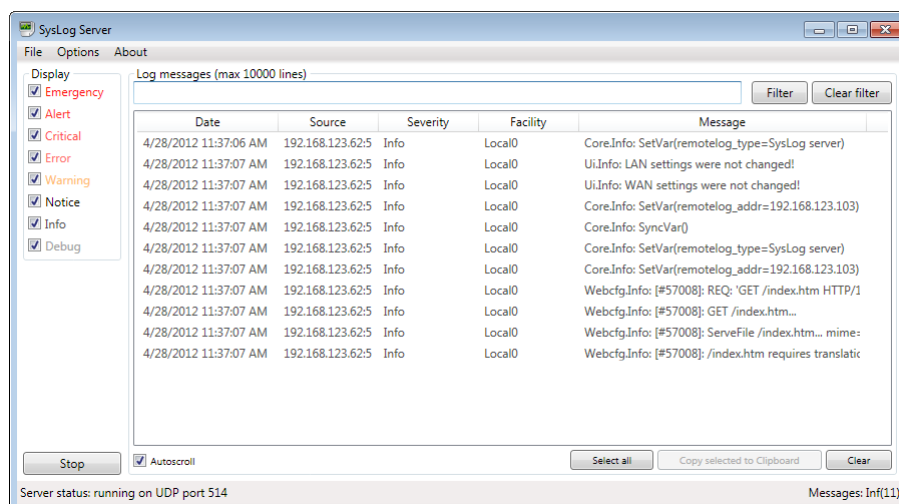


Figure 3: Syslog server window displaying messages from ProSTREAM

## Notes

- ProSTREAM sends log messages when there is some activity taking place. If you do not see any messages displayed in the syslog server try refreshing, or navigating ProSTREAM's web interface pages. This should send messages to the server.
- If you still do not see messages, double-check the IP address of the PC. Make sure it matches the address entered on ProSTREAM's Logs page.
- If you still do not see messages, double-check the Windows' firewall settings. As a quick test, you could try turning the firewall off, to see if you receive the messages then.
- You can save the log messages to a file. Select the output file under Options in syslog server.
- Syslog server must be running in order to capture messages sent by ProSTREAM. If syslog server is not running, some messages may be lost.
- ProSTREAM will continue to send messages to the IP address entered on the Logs page, even if syslog server is not running. If you no longer need logging, you should turn off the remote logging options on the Logs page in ProSTREAM.